

# DWG MOTORCYCLE SPEAKERS

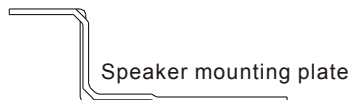
## Contents

Amplifier	1PC
Loud Speaker	2PCS
Power Cable	1PC
Audio Cable	1PC
Mounting Plate	2PCS
Screw Kit	1PC
User' s Manual	1PC
Power Remote Control Unit	1PC

## Features

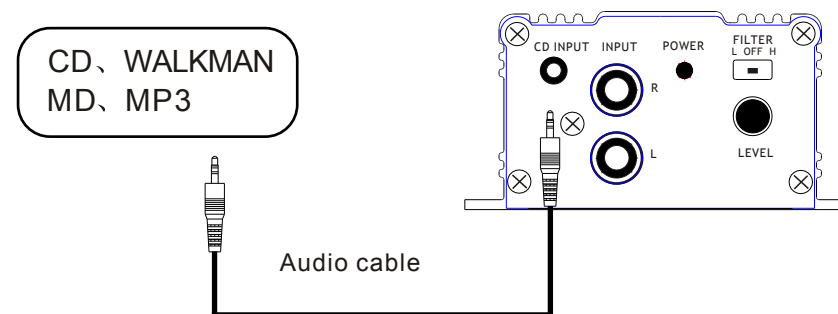
- 50W× 2 detachable amplifier with a pair of 3' weatherproof loudspeakers
- Built-in POWER switch and indicator
- Power on/off remote control unit (can replace the POWER switch on the rear panel )
- RCA & 3.5mm stereo input jacks(only one type be used at one time) make it easy for connection to other audio output devices like Mini-CD (Discman), MD, Mp3, Walkman, etc
- LPF/ HPF crossover switch
- Easy mounting
- Suitable for 10-16 Volts motorcycles, scooters and yachts

## Connections

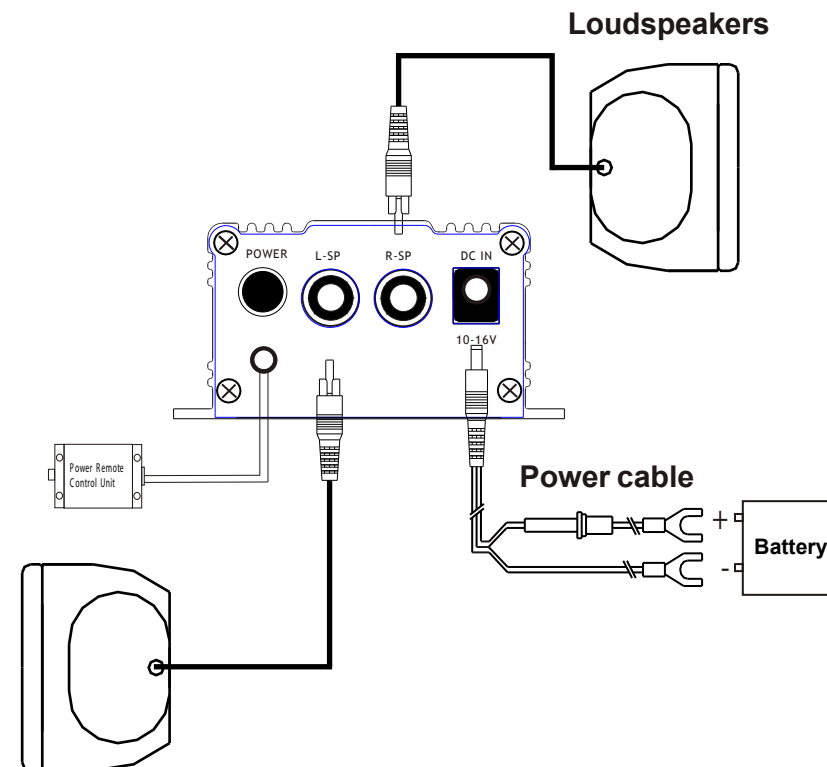


# DWG MOTORCYCLE SPEAKERS

## Amplifier-Front



## Amplifier-Rear



# DWG MOTORCYCLE SPEAKERS

## Specifications

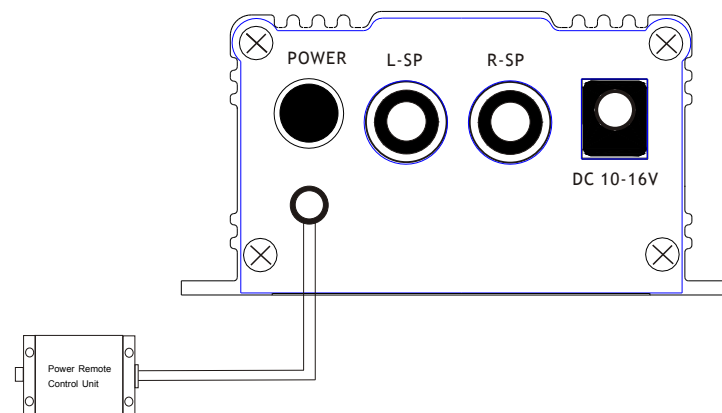
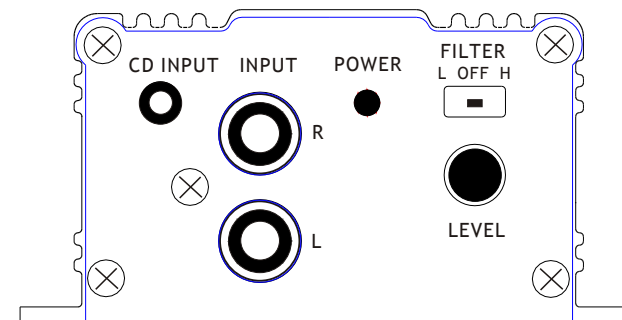
Operation Voltage	10~16V
RMS power @ 4Ω 10%THD	25WX2
RMS power @ 2Ω 10%THD	50WX2
THD	<0.1%
S/N	>50dB
Channel Separation	>50dB
Frequency response	20Hz-20kHz
Sensitivity	150mv
Fuse rating	5A
N.W.	1.5kg
G.W.	1.7kg
Pcs/carton	6 pcs
Carton size (LXWXH)	32.5X22.5X38.0cm

DWG(tm) Speakers  
<http://www.motorcyclespeakers.net>

# DWG MOTORCYCLE SPEAKERS

## Audio Stereo System for Boats and Motorcycles

### Owner's Manual



DWG-MSC-2050A(CHROME)  
DWG-MSC-2050B(BLACK)